



PCA CONTRACTS

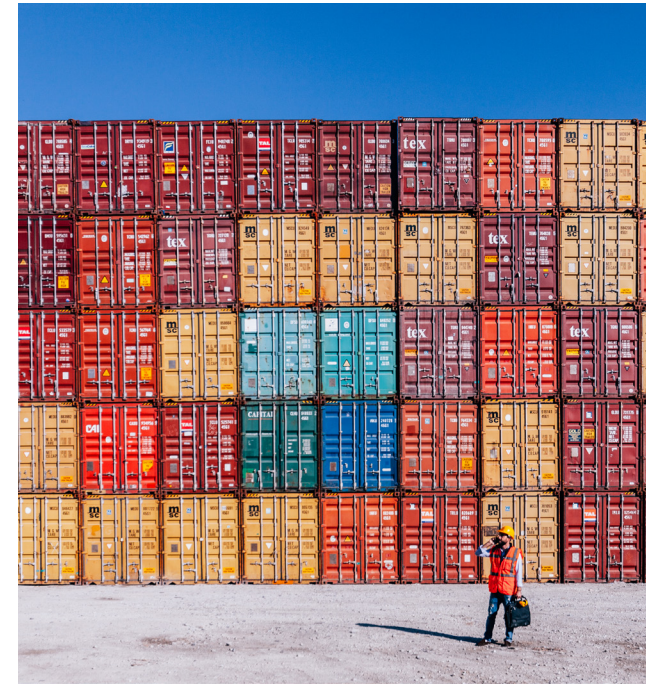
- Algeria
- Burundi
- Cameroon
- Côte d'Ivoire
- Egypt
- Ethiopia
- Gabon
- Kenya
- Kuwait
- Nigeria
- Qatar
- Saudi Arabia
- Tanzania
- Uganda
- Zanzibar

CONTACT US FOR MORE INFORMATION

Km1, Boulevard de Marseille
01 P.O.Box 795 Abidjan
Abidjan – CÔTE D'IVOIRE
West Africa
Office: +225 21752263
+225 21752260
Email: ci.gis@sgs.com

© SGS Group Management SA – 2018 – All rights reserved – SGS is a registered trademark of SGS Group Management SA

WWW.SGS.COM



VERIFICATION OF THE CONFORMITY OF PRODUCTS BEFORE SHIPMENT IN CÔTE D'IVOIRE

WHEN YOU NEED TO BE SURE

SGS

SGS

As from July 16th, 2018, the Ministry of Commerce, Handicraft and SME Promotion (MCAPPME) implements the Verification of Conformity Program (VOC) according to Decree No 2017-567 dated 06 September 2017 for the Provision of Verification of Conformity to standards.

Under this program, it is required that all imported products whose standards have been declared must imperatively be checked for compliance by Côte d'Ivoire Authorities and/or other technical regulations of Côte d'Ivoire.

THE OBJECTIVES

The purpose of the VOC Program is to:

- Ensure the quality of the product, it is healthy, safe and protects the environment for Ivorian consumers;
- Protect the public against substandard products that can endanger public health, safety and the environment;
- Protect the local manufacturers against the unfair competition for imported goods that do not comply with local standards.

MAIN FEATURES

- Goods imported into Côte d'Ivoire require a Certificate of Conformity (CoC);
- CoC is a mandatory clearance document for each consignment;
- Exporter is liable for any legal or economic consequences arising for goods shipped without the cover of a CoC;
- Responsibility of compliance lies with the supplier/exporter.

VOC PROCEDURE

To obtain a CoC the importer/exporter must:

- Fill in and submit a Request for Certification Form (RFC) with a Pro-Forma invoice;
- The above shall be complemented by description of goods and documents proving conformity such as test reports, data sheets, quality management system certificates if any;
- SGS reviews the file and confirms the route (see below) and standards applicable;
- SGS shall coordinate product sampling and testing with an accredited or approved laboratory (if applicable);
- Please note that inspection will be done after all the above requirements are met and payment made in full by the client.



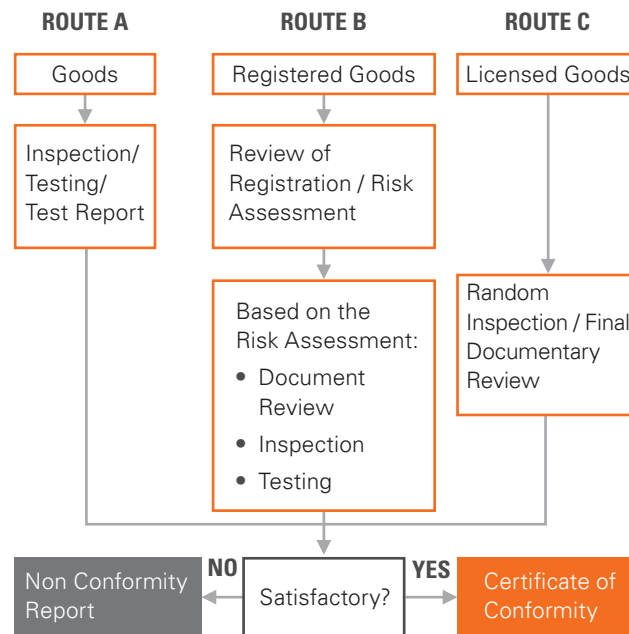
APPROVED LABORATORIES

Accredited and approved laboratories include:

- SGS accredited laboratories ISO/IEC 17025;
- Third party accredited laboratories ISO/IEC 17025;
- Manufacturer compliance laboratories, provided they:
 - Do have a Quality system (QMS) in place;
 - Do supply the list of tested equipment together with their latest calibration certificate.

ROUTES OF VERIFICATION

- ROUTE A: applicable to all goods and all operators/suppliers/manufacturers not registered;
- ROUTE B: applicable to frequent exporters of homogeneous products;
- ROUTE C: Applicable for manufactures only, for certified products.



FEES STRUCTURE, FCFA

ROUTES	% AD VALOREM FOB VALUE	MINIMUM FEES (FCFA)	MAXIMUM FEES (FCFA)
A	0.45	197'000 (EUR 300)	2'684'000 (EUR 4'092)
B	0.40	187'150 (EUR 285)	2'549'800 (EUR 3'887)
C	0.30	167'450 (EUR 255)	2'281'400 (EUR 3'478)

The above fees do not include the following activities:

- Testing: to be quoted on a case by case basis
- Containers sealing
- Sampling
- Loading supervision
- Product Registration: 375 EUR for first 15 Products/line items; 20 EUR for every additional product/ line item above 15 first products/line item
- Manufacturer Licensing
- Additional fees where goods or facilities are not ready or available at the time the supplier has advise and therefore an additional inspection visit is required.

WHY SGS ?

SGS has vast experience in delivering conformity assessment services, including in Africa and Middle East. We have an unparalleled network, local contract management, and a dedicated team of professionals.

Together with superior software platform, our conformity assessment services ensure consistency, speed efficiency and professionalism.

Specifically in Côte d'Ivoire, SGS participates in the monitoring of maritime traffic through its technical center ACI. Thus, for all exports by sea to Côte d'Ivoire, the commercial documents and those inherent to the transport are subject to a documentary review carried out by SGS.

WE OFFER:

- One stop shop for all certifications Worldwide;
- Key Account Management in one of the countries or/ and in our Contract Management Office;
- Immediate processing of your request;
- Support in linking all the parties participating in the process;
- Custom tailored solutions for your situations.